



Animal and Plant Health Inspection Service  
U.S. DEPARTMENT OF AGRICULTURE

# DO a Pig a FAVOR!

## Activity Book



**Learn to keep U.S. swine safe.**

# BE A PIG PROTECTOR

African swine fever (ASF) is a contagious virus that kills pigs. People can't get sick from it, but they can spread it. **This disease has never been detected in the United States — will you help us keep it that way?** Check out these puzzles and share what you learn to keep the U.S. fever free!



## SEARCH FOR SIGNS

African swine fever can look like other pig sicknesses. Spot the signs hiding in the puzzle.

### WORD STY

HIGH FEVER  
DECREASED APPETITE  
WEAKNESS  
BLOTCHY SKIN  
LESIONS  
DIARRHEA  
VOMITING  
COUGHING  
TROUBLE BREATHING

E W K X D K Z Y W K P A L H H O W V Q G  
I U Z V N A D O N V U M I X V I S I V Y  
G F D E C R E A S E D A P P E T I T E L  
M V J W K Z M C G N D Y J X H Q R E G E  
J R E U K W H S P Y H I G H F E V E R S  
Z O M X A Q N O Z R R B E I F O E J D I  
I E J W H C S G U Y G J M K X C A Z T O  
P F W Z W H A D S V W E O N D W A C M N  
B T R O U B L E B R E A T H I N G U E S  
A L Q D S F D K M F V I K T A D S I R V  
N M O U G N A W J T B H V M R L J L X I  
T K W T H K L R A K P J C X R B E Q M R  
D Z N O C Y P X M C I H W N H Z A R V G  
H B U V Q H L M T O P A R E E L B S P H  
P S L G Z P Y R J U R U L X A G Q X V Q  
W U G W X K B S P G Q D V N R K V O I P  
S J H O L I Z E K H X Z T X C A N Y A L  
M R X M H O A U L I B A P A X Y L E M D  
B G E R E G L V P N N U S S H D R O S E  
Q U V O M I T I N G W V O A T B T O V S



### Did You Know?

African swine fever was first spotted outside of Africa in 1957, when it was found on a pig farm in Portugal.



## BIOSECURITY MEASURES

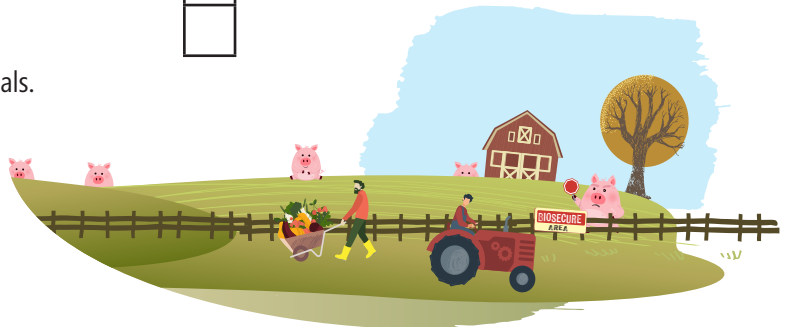
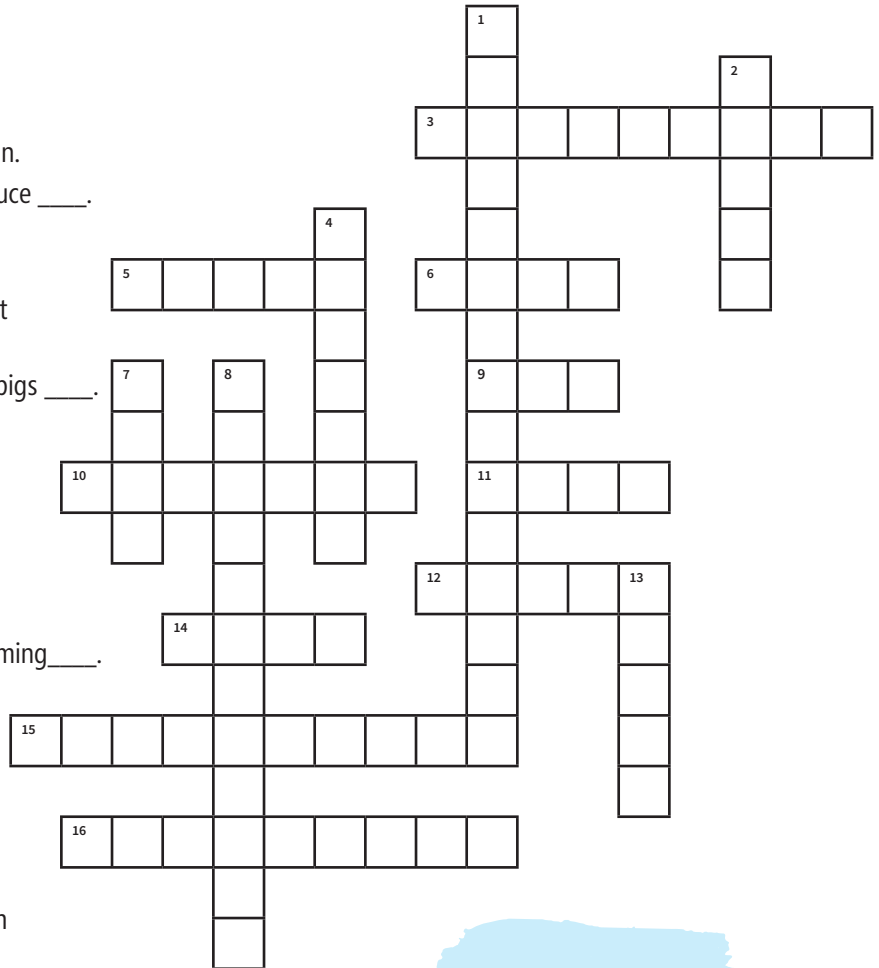
are steps you can take to protect people or animals from diseases. Grab your pig pen and finish the puzzle to fatten up your biosecurity smarts.

### ACROSS:

3. Don't feed this to pigs.
5. African swine fever is this well-known type of infection.
6. Limit on-farm traffic from people and vehicles to reduce \_\_\_\_.
9. Don't let people do this in animal areas — even if it's lunchtime.
10. The ASF virus can stick to these, so wear a fresh outfit for farm visits.
11. By working together, we can all help keep America's pigs \_\_\_\_.
12. Wash these before you visit pigs. And after you go to the bathroom, of course.
14. If this blood-sucking insect feeds on a sick pig, it can spread infection.
15. Because it passes easily from one pig to another, ASF is considered highly \_\_\_\_.
16. From tools to trailers, ASF can stick to all kinds of farming \_\_\_\_.

### DOWN:

1. The disease has never been detected in this country, fondly called "the land of the free and the home of the brave." (3 words)
2. Another word for wild swine that can carry ASF.
4. All equipment and vehicles entering or leaving a farm should be \_\_\_\_.
7. Store feed where it can't be contaminated by \_\_\_\_ animals.
8. If you see signs of infection, have an adult call the USDA and a \_\_\_\_.
13. Clean these or you risk tracking trouble with each step.



### Did You Know?

Customs officers enforce biosecurity by monitoring the plant and animal products that people bring across borders. Detector dogs help them sniff out trouble!

# THE TRIVIA TROUGH



QUIZ A PARENT OR FRIEND AND ADD UP THEIR POINTS TO  
TEST THEIR SWINE SAVVY

**Q** How many pigs are in the USA?

**A** About 75 million  
+1 point • TOTAL \_\_\_\_\_

**Q** Can people catch African swine fever?

**A** No, but they can spread it  
+1 point • TOTAL \_\_\_\_\_

**Q** How many countries have had cases of African swine fever?

**A** 120  
+1 point • TOTAL \_\_\_\_\_

**Q** Name ways pigs can catch African swine fever.

**A** Direct transmission from a sick pig to another pig  
Contaminated feed  
Garbage feeding  
People eating in pig areas  
Visitors who didn't disinfect their clothes, shoes, equipment, vehicles or hands  
Transmission by insect

+1 point for every right answer, 6 total • TOTAL \_\_\_\_\_

**Q** If you see signs of African swine fever, what should you do?

**A** Call the USDA for testing  
Call a veterinarian for testing  
+1 point for every right answer, 2 total • TOTAL \_\_\_\_\_

**Q** What are other words that mean "pig"?

**A** Hog Boar Piggy Piglet  
Swine Sow Porker

+1 point for every right answer, 7 total • TOTAL \_\_\_\_\_

**Q** Is African swine fever deadly to pigs?

**A** Yes, it's up to 100% lethal for pigs  
+1 point • TOTAL \_\_\_\_\_

**Q** Has African swine fever ever been detected in the United States?

**A** No!  
+1 point • TOTAL \_\_\_\_\_

**Q** Name signs of African swine fever.

**A** Fever Diarrhea  
Decreased appetite Coughing  
Weakness Vomiting  
Red, blotchy skin Difficulty breathing  
Skin lesions

+1 point for every right answer, 9 total • TOTAL \_\_\_\_\_

**Q** Where on the web can you find more information?

**A** [www.aphis.usda.gov/ProtectOurPigs](http://www.aphis.usda.gov/ProtectOurPigs)  
+1 point • TOTAL \_\_\_\_\_

## TOTAL SCORE

### 0-5: A WEE WEE WEE BIT SMART

Time to go hog-wild and sniff out a little more learning. Learn how to fight African swine fever at

### 6-19: SNORTA SMART

Congrats – you have buckets of knowledge about keeping swine safe! Root around for more intel at

### 20-30: SLOPPY WITH KNOWLEDGE

You're a hoggone genius! Find sharable materials to make your friends as smart as you are at

[www.aphis.usda.gov/ProtectOurPigs](http://www.aphis.usda.gov/ProtectOurPigs)



# JOURNEY TO JASPER



**OH NO!** Jasper the pig is showing signs of African swine fever. His owner noticed and called Jasper's veterinarian to come test for ASF. Complete the maze to help Dr. Rosemary reach her patient.



**Did You Know?**

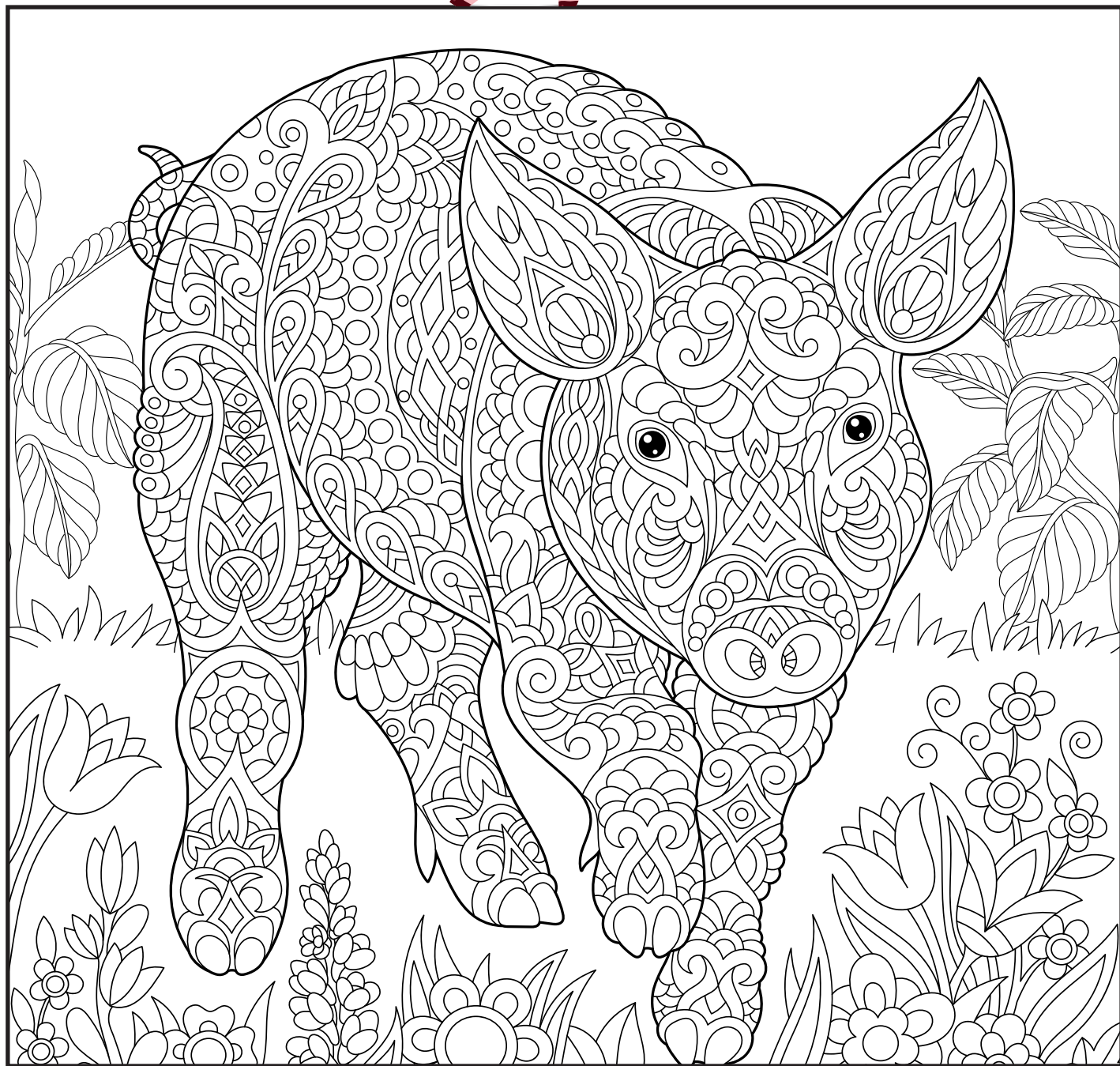


There are different kinds of veterinarians that take care of different animals. A “large animal” or “livestock” vet is the kind who cares for pigs.

# Not-So-Plain Jane



Jane the pig is feeling a little drab. Grab your coloring tools and brighten up Jane's day.

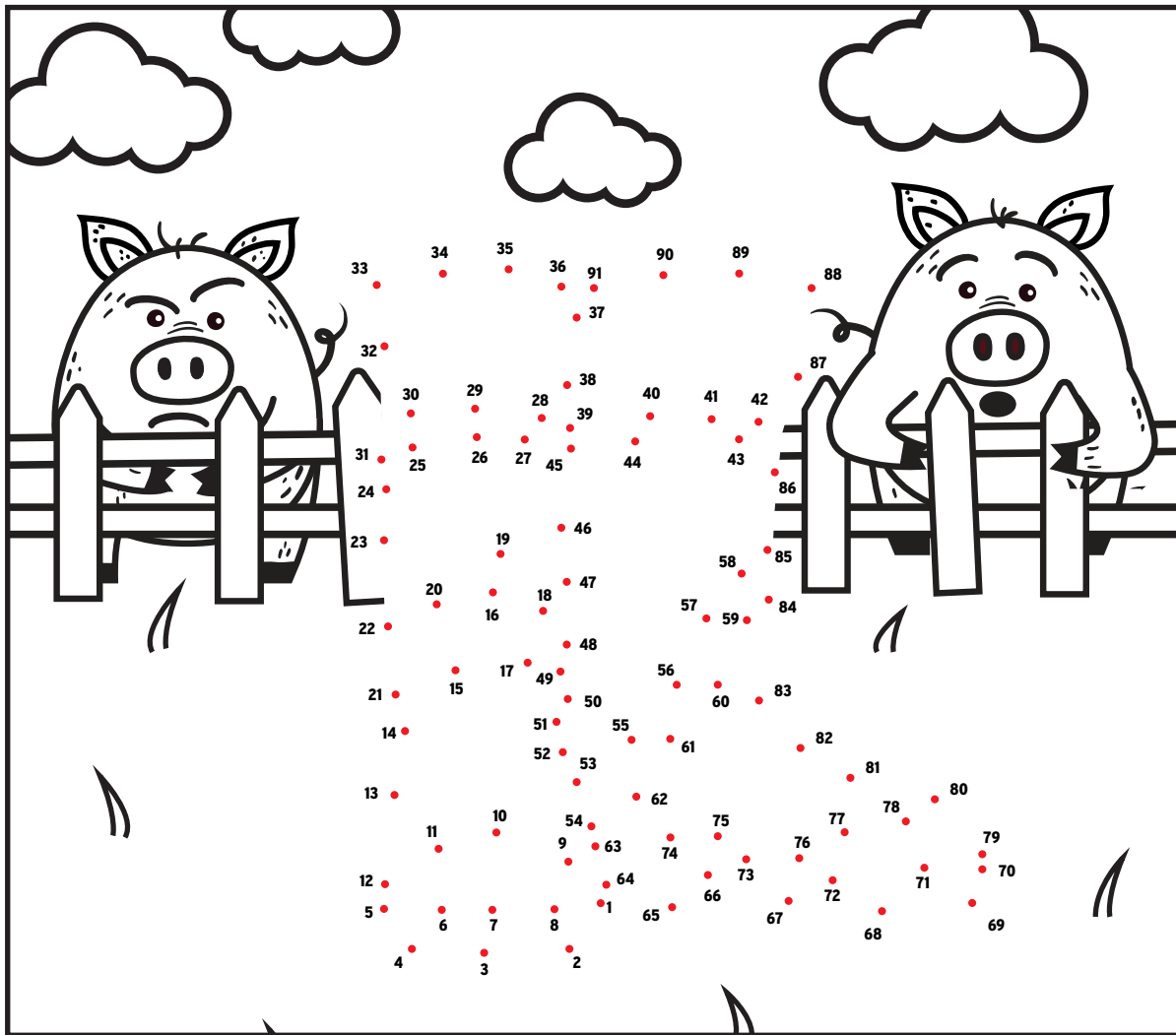


**Did You Know?**

Though they can't see as many hues as people can, pigs' vision is dichromatic – that means they can distinguish color!

# DOT-TO-DOT OF DESTRUCTION

Connect the dots to reveal the danger.



**HINT:** If you want to stop trouble in its tracks, always disinfect this traveling twosome before and after a pig visit.

**Did You Know?**



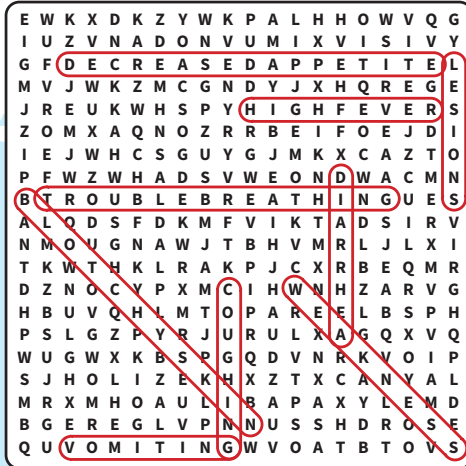
One biosecurity breach could be a big problem. If ASF made it to the United States, it would cost as much as \$75,000,000,000 over 10 years.



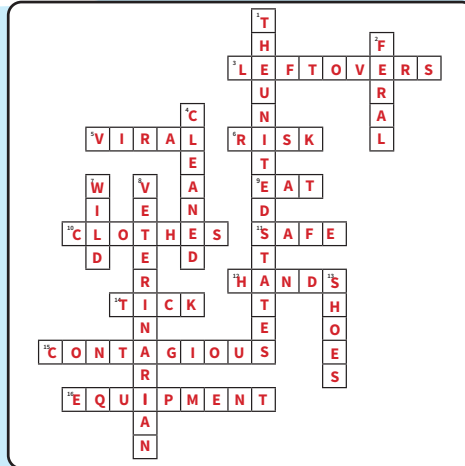
shh

# ...IT'S THE ANSWERS!!

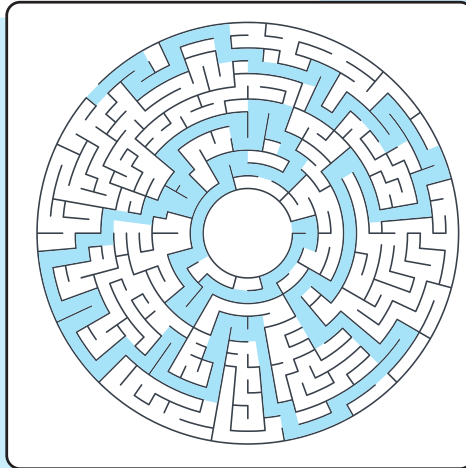
## SEARCH FOR SIGNS



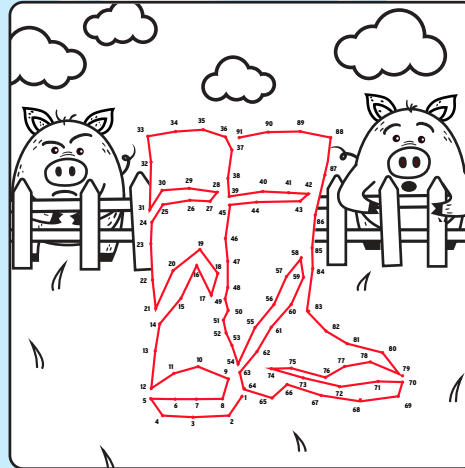
## Biosecurity Cross Check



## JOURNEY TO JASPER



## DOT TO DOT OF DESTRUCTION



## SPOT SIGNS OF AFRICAN SWINE FEVER?

Act fast! Have an adult contact a veterinarian for testing, or call the USDA at 1-866-536-7593.

Learn more at [www.aphis.usda.gov/ProtectOurPigs](http://www.aphis.usda.gov/ProtectOurPigs)

